

Paper Catch

Paper Catch for Secure Ticket Issuing for the Info-Printer Series GPT-686x

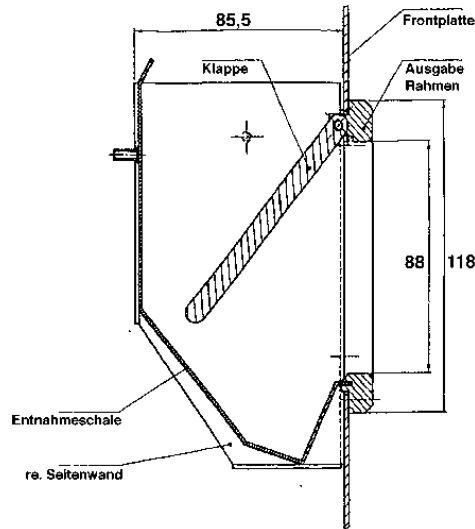
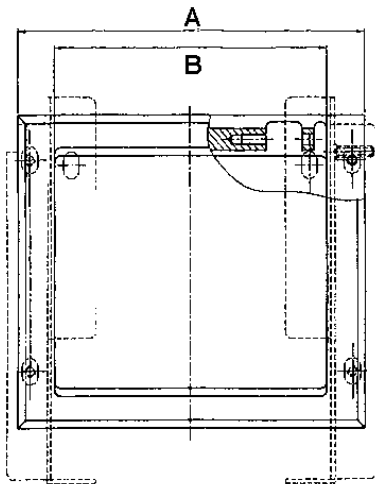


GeBE Document No.:
KI-E-393

Housing made of high-quality steel - ideal for outdoor applications!

The paper catch is made of 1.5 mm thick high-quality steel. The front frame is anodized aluminum. Inside the frame is a 7.5 mm acrylic glass door that can only be pushed open towards the inside. The access to the printer above is blocked.

For installation, only a rectangle cut-out in a front panel of 2.5 mm to 6 mm thickness is required.



	GPS-085-M	GPS-114-M	GPS-150-M	GPS-220-M
Total width: A	142.5 mm	180 mm	230 mm	280 mm
Inside width door : B	112.5 mm	150 mm	200 mm	250 mm
cut-out	123x104 mm	161x104 mm	211x104 mm	261x104 mm

Errors and changes reserved. The technical data given are non-committal information and do not represent any assurance of certain features.
Our terms of payment and delivery apply. All rights reserved.

GeBE Elektronik und Feinwerktechnik GmbH

Beethovenstr 15 • D-82110 Germering near Munich • Germany
Phone ++49 (089) 89 41 41-0 • FAX: ++49 (089) 84 021 68

GeBE-Doc.-No.: 393-KI-E-Catch-V1.1