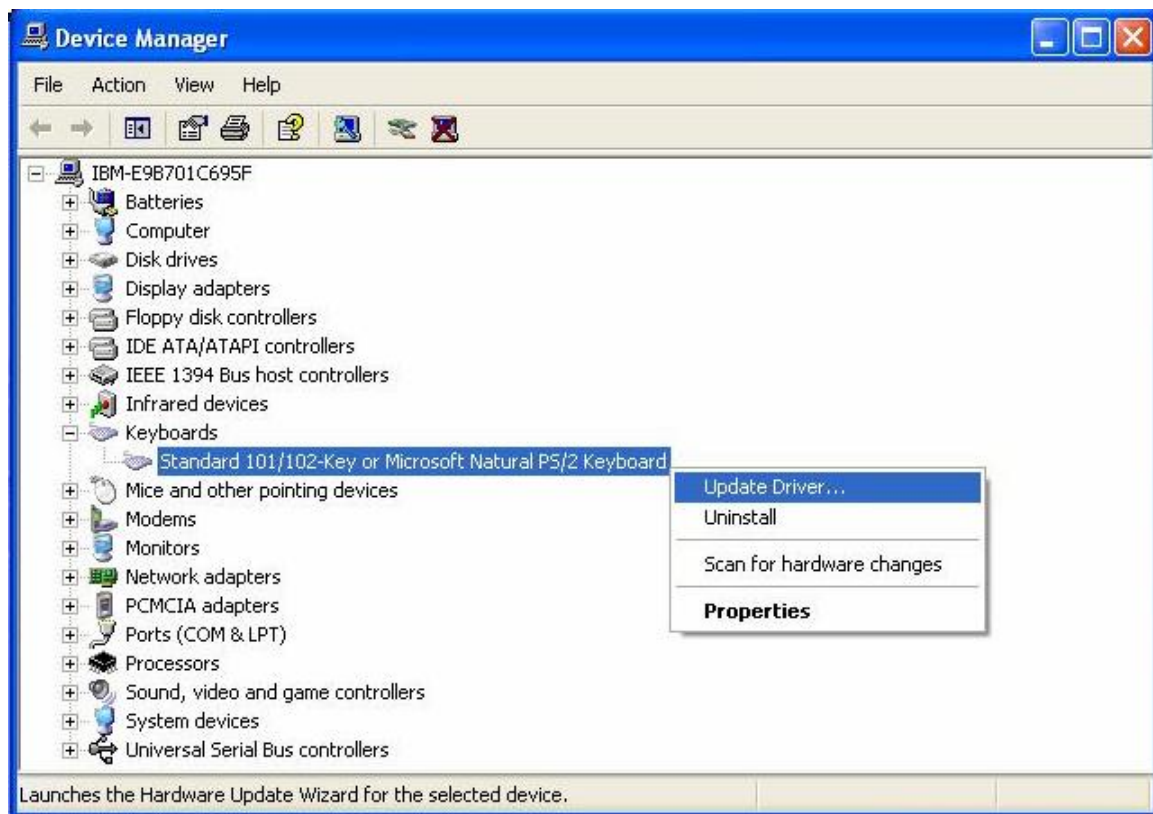


PS/2 Programmable Keyboard Driver Setup

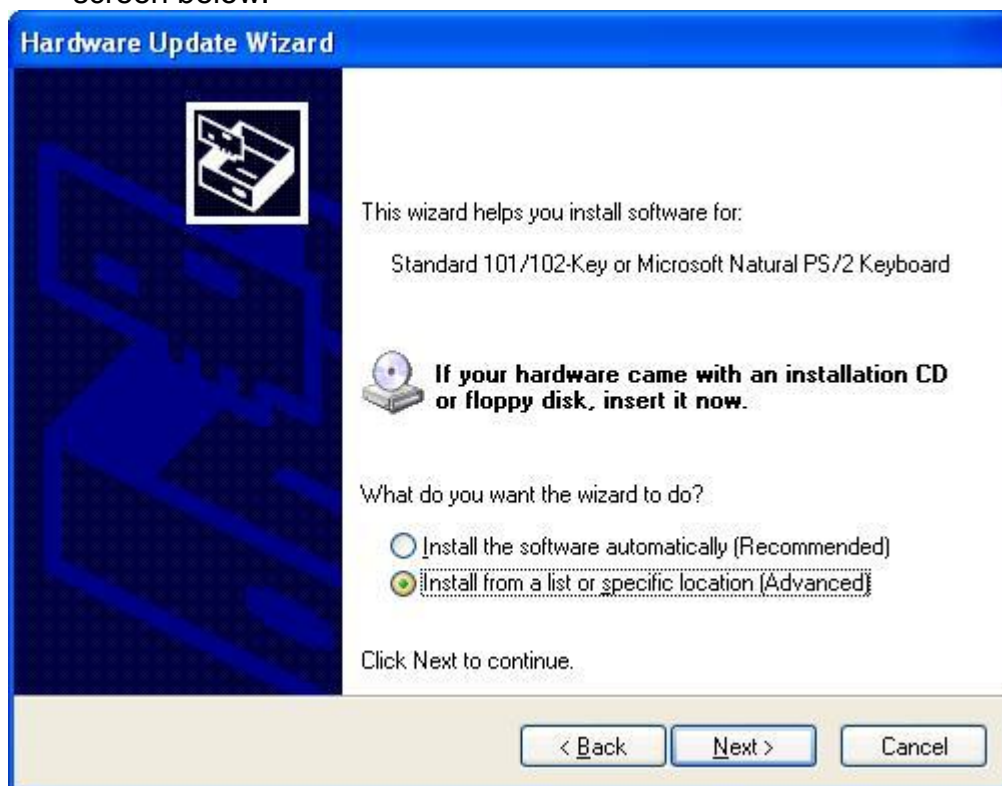
This section is only valid for Windows 2000® and Windows XP®. For Windows 95®, Windows 98® and Windows Me®, no need to do the driver setup for the PS/2 programmable keyboard. The following instructions are performed in Windows XP® (Service Pack 2) and Windows 2000®.

Windows XP® (SP2)

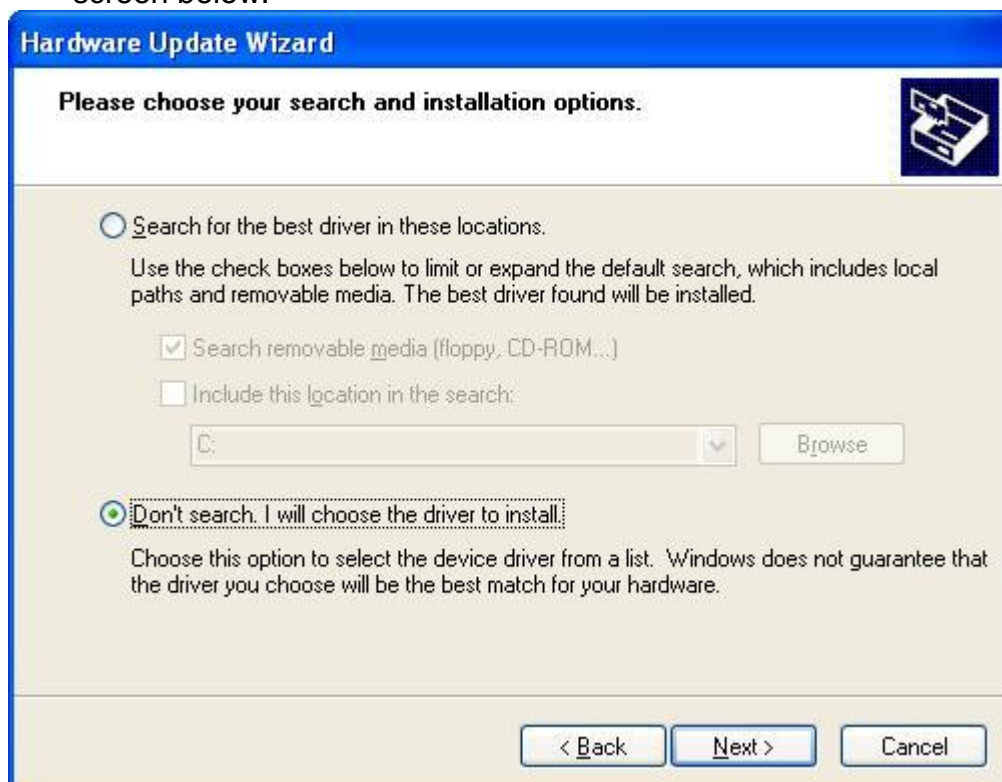
1. Open the “Device Manager” from the System in Control Panel. Choose the default keyboard driver as below and then right click this driver. Click on “Update Driver” of this driver.



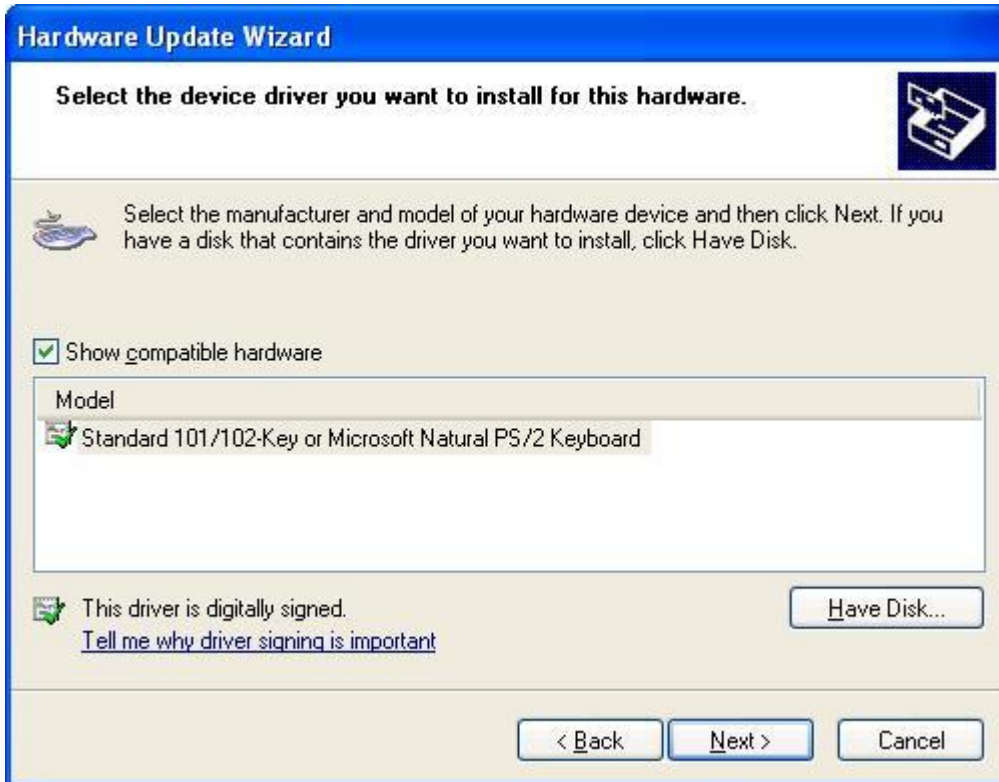
2. Choose "Install from a list or specific location (Advanced)". Press "Next" in the screen below.



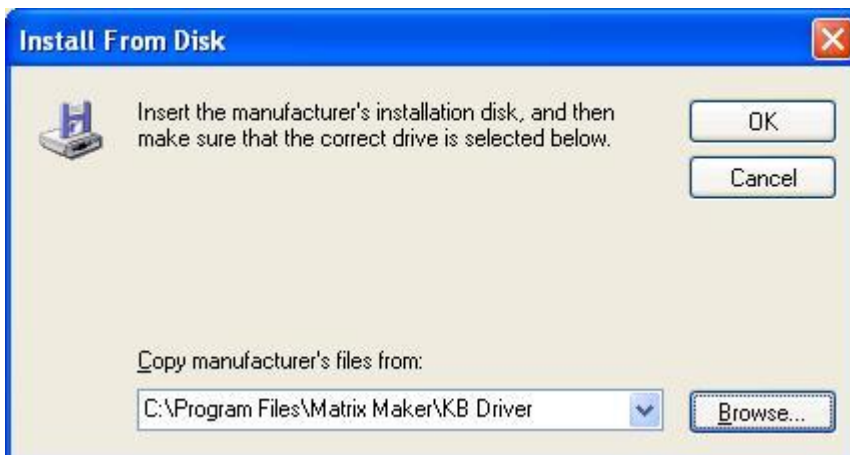
3. Choose "Don't search. I will choose the driver to install". Press "Next" in the screen below.



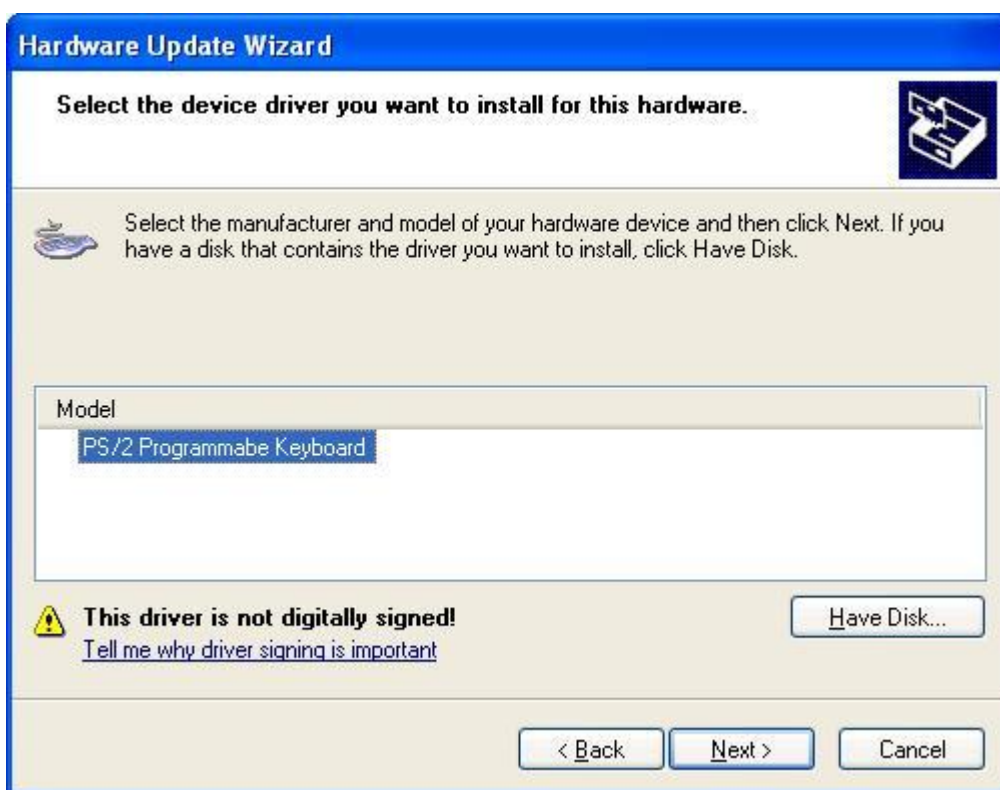
4. In the screen below, select the device driver for the “Standard 101/102-key or Microsoft Natural PS/2 Keyboard” and then press “Have Disk...” to proceed.



The keyboard device driver is located in the “KB Driver” folder under the folder where the programmable keyboard application is installed. Press “Browse...” to locate this folder. Then press “OK” button.



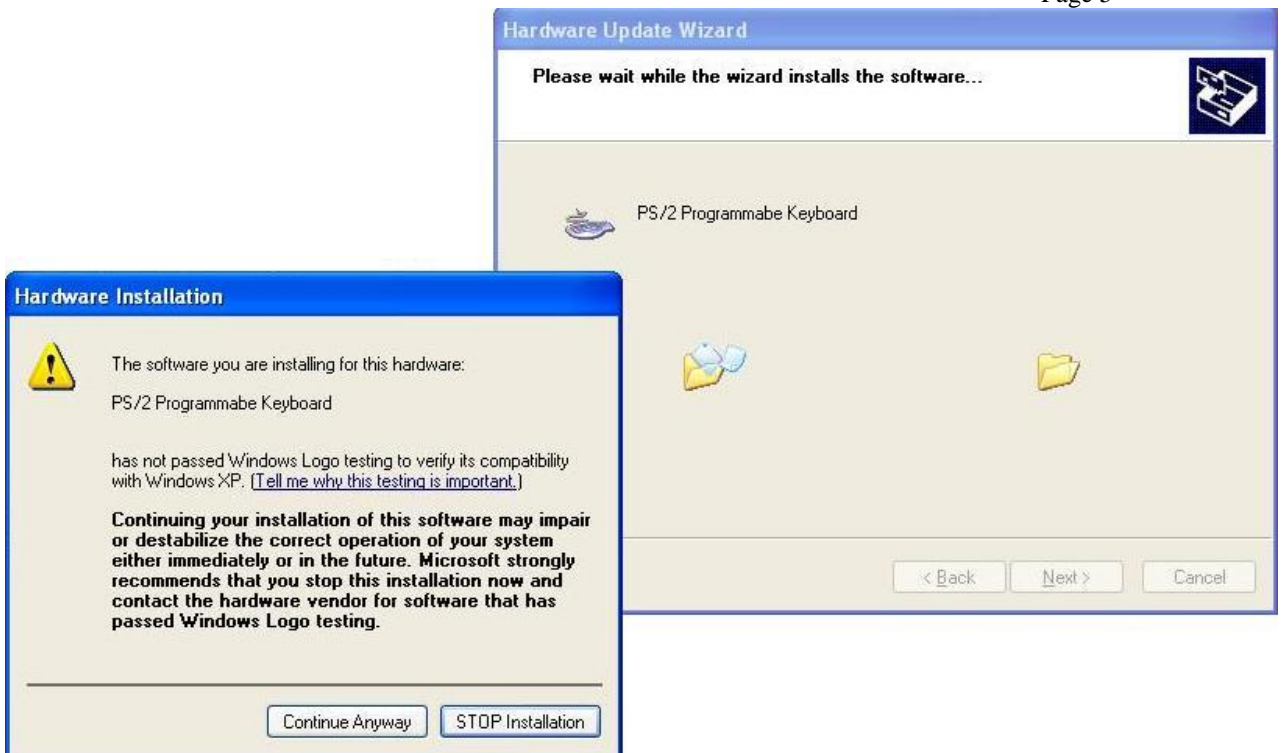
5. In the screen below, select the device driver for the “PS/2 Programmable Keyboard” and then press “Next” to proceed.



Ignore the Warning and press “Yes” to proceed with the driver update.



6. During installation, the following dialogue window appears.



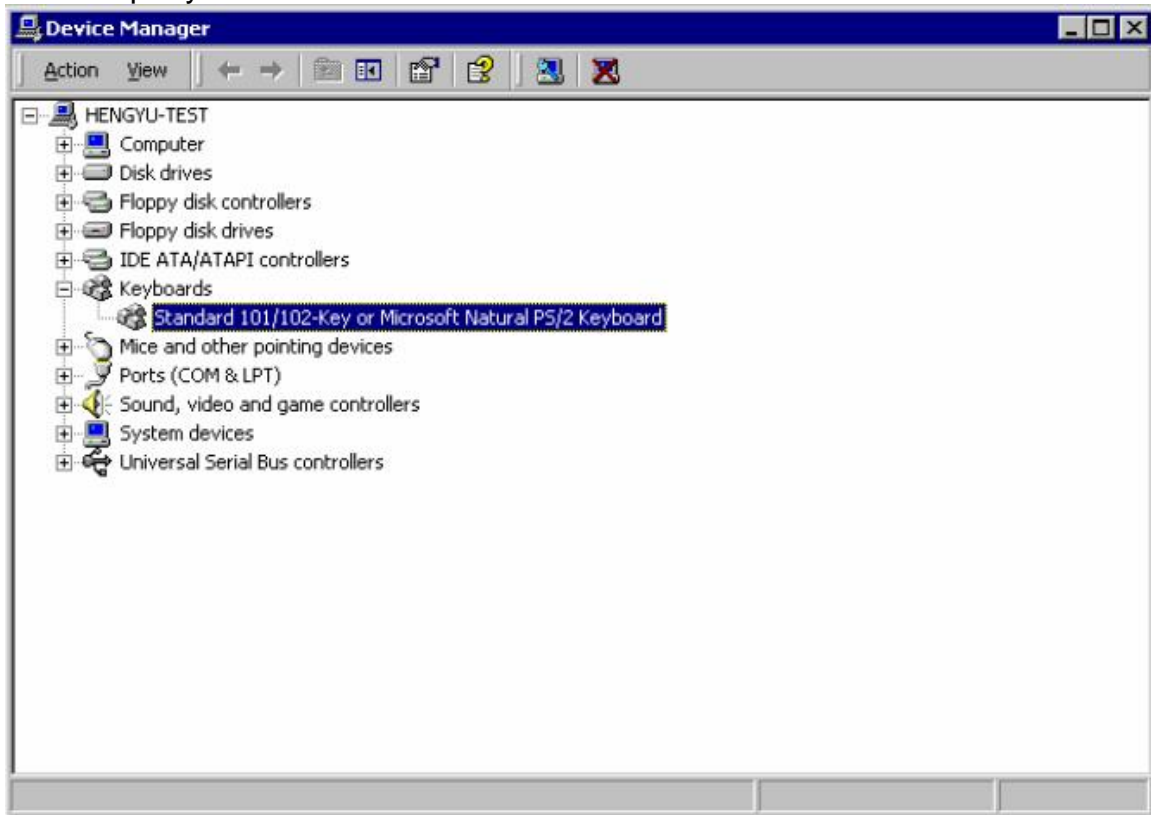
Press "Continue Anyway" button to proceed.

7. When the driver upgrade is finished, the following screen will be come out. Press "Finish" to end the device driver upgrade. Reboot your machine and then the programmable keyboard application can be run.



Windows 2000®

1. Open the “Device Manager” from the System in Control Panel. Choose the default keyboard driver as below and then right click this driver. Click on “Property” of this driver.



3. Press "Update Driver..." in the screen below.



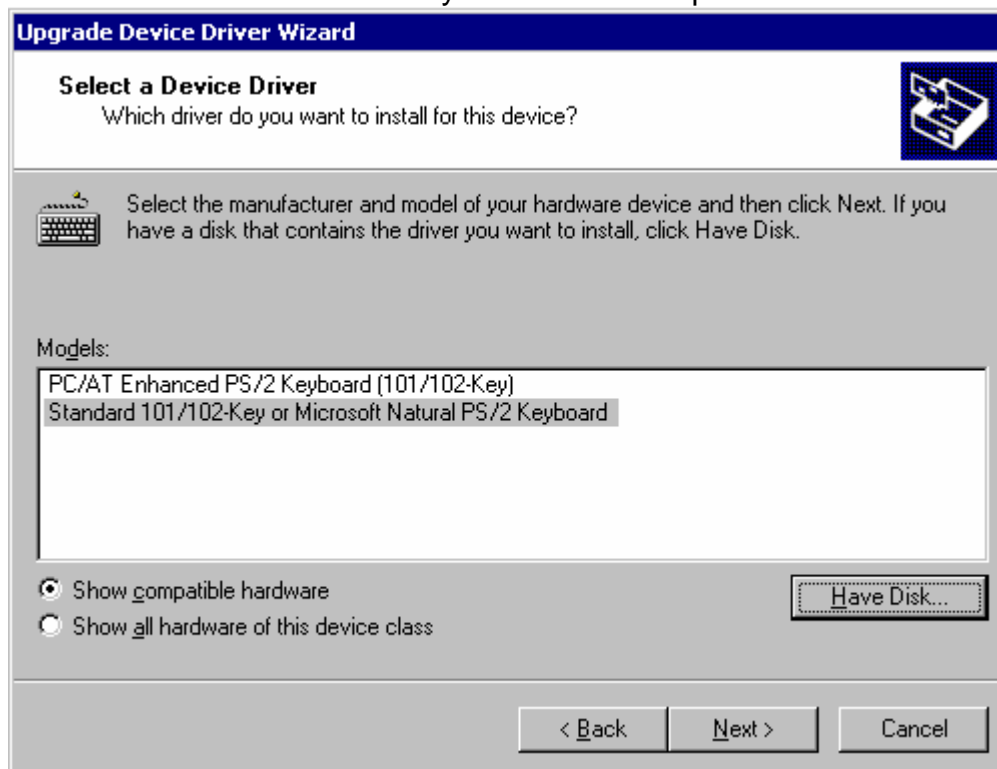
8. Press "Next" to prepare to upgrade the keyboard driver.



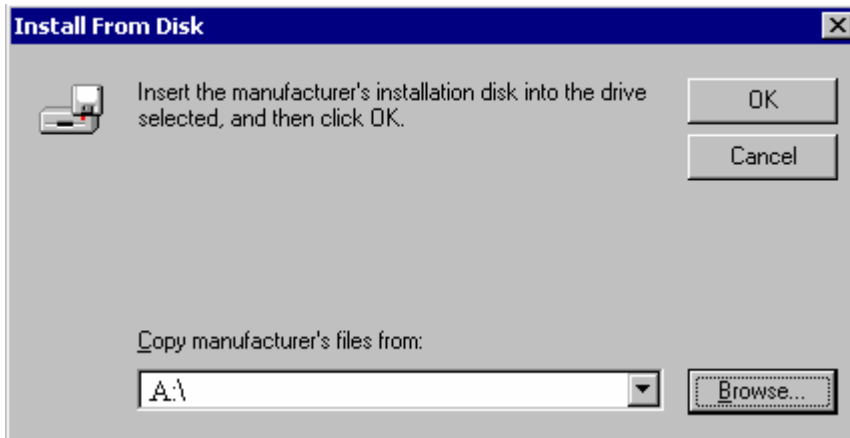
9. In the screen below, choose “Display a list of the known drivers for this device so that I can choose a specific driver” and then press “Next” to proceed.



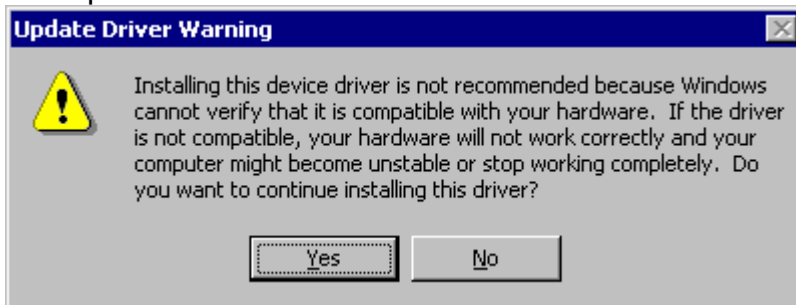
10. In the screen below, select the device driver for the “Standard 101/102-key or Microsoft Natural PS/2 Keyboard” and then press “Have Disk...” to proceed.



11. The keyboard device driver is located in the “KB Driver” folder under the folder where the programmable keyboard application is installed. Press “Browse...” to locate this folder.



12. Double click the new device driver “kbfilter.inf” and the following screen will be popped out. Ignore the Warning and press “Yes” to proceed with the driver update.



13. The device driver “PS/2 Programmable Keyboard” will be found in the screen below. Press “Next” to proceed.



14. Press “Yes” to continue the installation.



15. When the driver upgrade is finished, the following screen will be come out. Press "Finish" to end the device driver upgrade. Reboot your machine and then the programmable keyboard application can be run.

